



# Instructions

## DRAWER HANDLE ATTACHMENT

---

Thank you for purchasing your Drawer Handle from AAL! We greatly appreciate your trust in our company. We take that purchase and your commitment to us very seriously. If you have any questions along the way, please don't hesitate to give us a call at 385.202.4188.

**\*\*Please read these instructions thoroughly before starting this project.\*\***



**NOTE: These instructions are applicable to the assembly of all Drawer Handle sizes. (This document uses the 6" wide drawer handle)**

### Tools Required:

There is more than one tool for every job, but below is the list of tools we use for this installation.

*Tools listed are for assembly only, as disassembly tools will vary.*

- 4mm Allen Wrench/Socket
- Electric drill and 1/4" drill bit

### Hardware included:

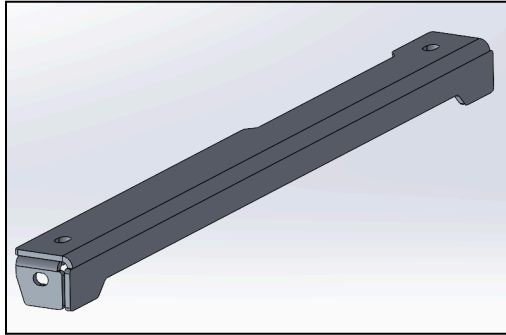
M6x14mm Button Head Flange Bolts	4	M6 Nylon Locknuts	4
----------------------------------	---	-------------------	---

### Part Overview and Prep

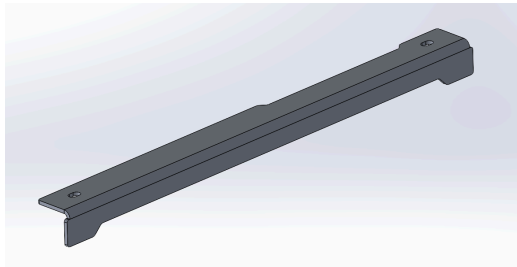
First lets review images of all the necessary parts and hardware to ensure we have everything we need for the installation process



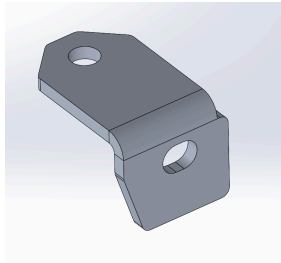
## Drawer Handle Parts:



Handle Bracket (Any Drawer Length) (1):



Side Brackets (2):



## Hardware:

M6x14mm Button Head Flange Bolts



M6 Nylon Locknuts



## **Step 1 - Remove the red rubber covers**

When looking at the face of your drawer, there are two red rubber latches that you push down together to unlock the drawer. First remove these covers using a knife or nox cutter to slice and peel.



Now using a 1/4" drill bit screw two holes into the divot at the most outward edge as shown below.



**NOTE:** it is highly recommended to screw these holes from the right side of both pieces since the clockwise rotation of the bit will cause the latches to move downward while screwing, potentially ruining the holes if drilled from the left side

Once complete, the handle pieces should look as follows.

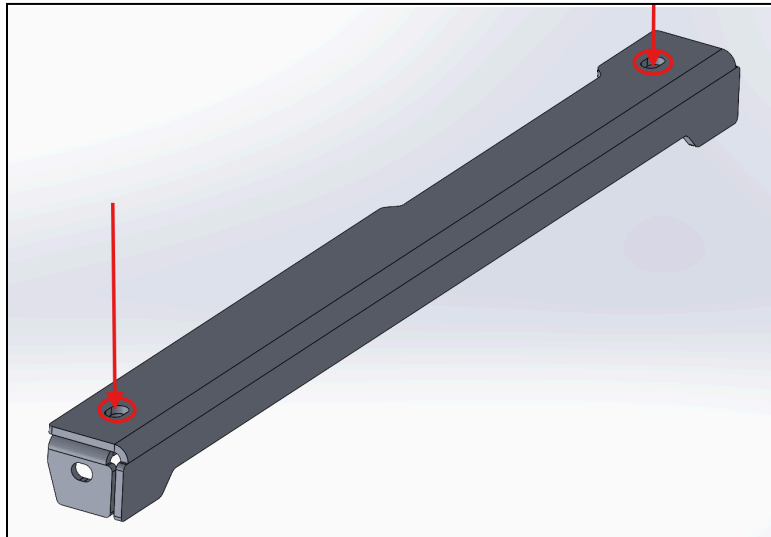


## **Step 2 - Assemble the Handle**

Regardless of which handle length you purchased, the assembly process is the exact same. First we need to attach the two side brackets to the handle pieces using (2) M6x14mm Button Head Flange Bolts and (2) M6 Nylon Locknuts. Do so as shown below.



Then attach the handle bracket using the exact same hardware, (2) M6x14mm Button Head Flange Bolts and (2) M6 Nylon Locknuts.



## **Share Your Photos!**

We take great pride in building our products and we hope that pride extends to you after installing your Drawer Handle. If you are able to share your photos online (Facebook and Instagram), please tag **@AmericanAdventureLab**. We would love to see how it turned out and give you some reciprocal attention in return!

**Congrats! You're all done!**

**Thank you!**

**At American Adventure Lab, we strive to improve anywhere we can. If you experience any issues with this product or have any suggestions, please let us know.**

**If you have any questions or concerns, please don't hesitate to reach out to us at 385.202.4188 or via email at [Support@erp.adventurelab.com](mailto:Support@erp.adventurelab.com).**

